

# QCU-100

## Video Conferencing MCU



FREE ID SETTING

MULTI-INTERFACE  
CONTROL

PASSWORD  
PROOF



### Features

- \* Digital matrix encoding: you can set/change the ID number for each conference microphone, which avoids the traditional way of manual switch and the problem of repeated encoding.
- \* Web interface for conference management: via TCP/IP control, you can use the PC or mobile devices to set/change the MCU's settings randomly.

- \* Multipoint network control: multiple administrators can log in at the same time to set and manage the conference.
- \* Password protection: preventing the unauthorized person logging in the MCU and controlling the system.
- \* Play and record the audio sources.
- \* USB interface for the PC's graphical control software.

### Power Supply

External Power Supply	DC 24V 5A MAX
Voltage/Frequency	110/220V
Model No. of Power Supply	SH-2450A
Total Power of Power Supply	120W
Weight of Power Supply	0.5Kg (power cord not included)

### Electrical Characteristics

Frequency Range	100~16khz
Total Harmonic Distortion (THD)	0.1%
SN-ratio	85dB (76dB jiS A-weighted average)

### System Characteristics

Qty. of Unit Control	Chairman x 5 + Delegate x 35
Operation Modes	Normal / Chairman / Override / FIFO
Mic Auto-off Time	30/45 seconds / unlimited
Qty. of the Open Mic	1-10 units
AGC Control	Extensible
Volume Control for Individual Mic	Extensible
AGC Control for Individual Mic	Extensible

### Physical Dimension

Unit Size (H*W*D)	44*350*220 (mm)
Cabinet 19"	1U
Weight	2Kg (power supply not included)
Temperature for Storage	-20°-60°C (10-80% moisture)
Operating Temperature	5°-40°C (35-80% moisture)



Signal Input	
LINE IN	RCA x 1
USB IN	USB sound card
Signal Output	
LINE OUT	RCA x 2 (unbalanced)
LOOPBACK OUT	RCA x 1
USB OUT	USB sound card
Control Output	
Control Format	USB HID, TCP
Ethernet	10Mbps
USB	High-speed USB

Accessories

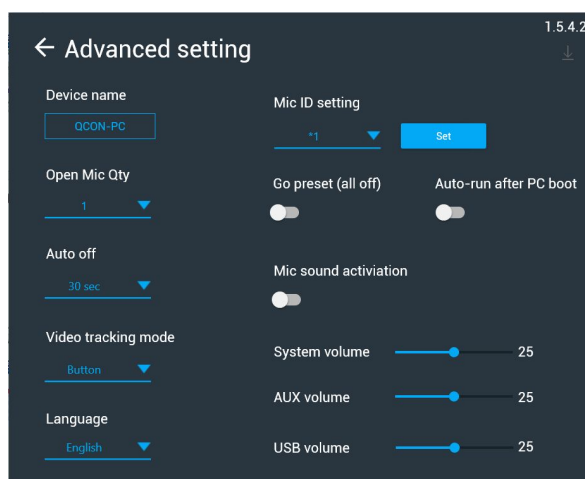
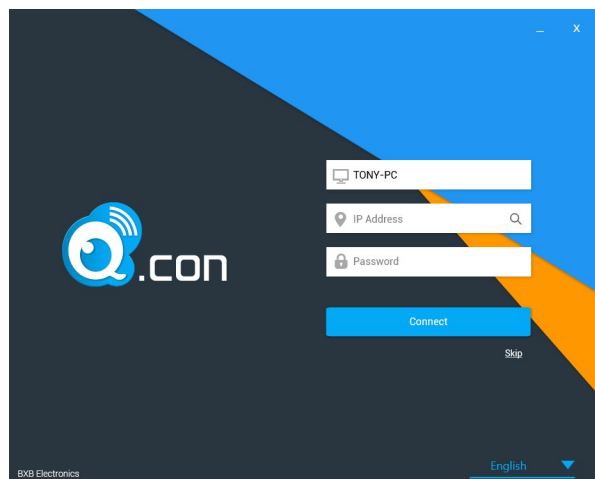
SH-2450A Power Supply



Supply the power for the MCU

Size: 155\*70\*45 (mm)  
DC: 2.1mm DC  
AC: IEC C13/C14 (with the power cord)  
Input Voltage: AC 100-240V 50/60Hz  
Output Voltage: DC 24V MAX 5A

# Q.con Graphical Control Software



## System Requirements

Processor	Intel Pentium 2.8GHz dual-core processor or the faster
RAM	4GB DDR3 or more
Hard Disk Drive	200GB SATA or more
Display Interface	Intel HD or the higher
Operating System	Windows 7 or the later; Windows 10 is recommended
Internet Interface	10 / 100 / 1000Mbps Giga Ethernet
USB Interface	USB 3.0 x1 and USB 2.0 x 3 at least to be compatible with the basic operating requirements

## Software Functions

Language	Support English, traditional Chinese, simplified Chinese, and Korean
Password	Manage and control the MCU via TCP/IP or USB mode
Status Indicator	Display the status of the MCU and camera with different colors of indicator light
Conference Modes	Normal, chairman, override, and FIFO
Operating Mic Display	Display the operating Mic's ID
Open Mic Qty	Set the quantity of the operating microphone (1-10 units)
Mic Auto-off	30/45 seconds
Mic Sound Activation	ON/OFF the sound activation function
Volume Setting	Individually adjust the volume of system, AUX, and PC
Video Operating Interface	Instantly display HDC-611 camera's video via USB 3.0. You can also adjust the direction, zoom in/out and the preset point of the camera.
Video Tracking	OFF/Button/Voice mode for HDC-611 camera's video tracking